

# A new species belonging to the dancefly genus *Syneches* Walker of the subfamily Hybotinae from Korea (Diptera: Empidoidea: Hybotidae)

Jin Hyung KWON<sup>1,C</sup>, Yong Jung KWON<sup>2</sup>, Sang Jae SUH<sup>2</sup> and Ding YANG<sup>3</sup>

<sup>1</sup>Illinois Natural History Survey, University of Illinois, Champaign, IL 61820, USA

<sup>2</sup>School of Applied Biosciences, Kyungpook National University, Daegu 41519, Korea

<sup>3</sup>Department of Entomology, China Agricultural University, Beijing 100193, China

<sup>C</sup>Corresponding author. E-mail: jhkwon@illinois.edu

## Abstract

The dancefly genus *Syneches* Walker, 1852 can be characterized by having the wing with anal cell about as long as basal cell; radical sector strikingly longer than the distance from humeral crossvein to its origin. Hitherto, only one unnamed species has been recorded to Korean fauna. In the course of taxonomic survey on the danceflies in Korean peninsula, the authors have found the second Korean species of the present genus new to science: *Syneches koreana* sp. nov. This new species is closely allied to *S. bicornutus* Yang et Yang, 2004, distributed in Guangdong Province, China. Description, illustration of morphological features and key to the Korean species of the genus are provided respectively.

**Key words:** Diptera, Empidoidea, Hybotidae, dancefly, taxonomy, identification, new species.

## Introduction

The danceflies belonging to the genus *Syneches* Walker, 1852 in the subfamily Hybotinae Meigen, 1820 are comparatively large often exceeding 5 mm in body size, and both sexes are predacious feeding on minute insects or mites.

The present genus can be characterized by having the wing with anal cell about as long as basal cell; radical sector strikingly longer than the distance from humeral crossvein to its origin. Although the only one unnamed species has been recorded to Korean fauna (Lee and Kwon, 1975; Kwon *et al.*, 2021), the constituent taxa reveal wide zoogeographical distributional trends through Oriental, Afrotropical and Holarctic regions.

In the course of taxonomic survey on the danceflies in Korean peninsula, the authors have found the second Korean species of the present genus new to science: *Syneches koreana* sp. nov. This new species is closely allied to *S. bicornutus* Yang et Yang, 2004, distributed in Guangdong Province, China.

Description, illustration of morphological features and key to the Korean species of the genus are provided respectively.

## Systematics

Superfamily Empidoidea Latreille, 1804 춤파리상과

Family Hybotidae Meigen, 1820 꼽추춤파리아과

Subfamily Hybotinae Meigen, 1820 꼽추춤파리아과

Genus *Syneches* Walker, 1852 길꼽추춤파리속

Diagnosis: Compound eye with upper facets enlarged. Wing with anal cell about as long as basal cell; radical sector strikingly longer than the distance from humeral crossvein to its origin. Male genitalia symmetrical, with sustylus didentate apically.

Checklist of species from Korea

*Syneches* sp. 길꼽추춤파리

*Syneches koreana* sp. nov. 우리길꼽추춤파리(신칭)

Key to the species distinguished from allied species

1. Male genitalia with apical margin of hypopandrium shortly bidentate, irregularly emarginate in lateral view ----- *bicornutus* Yang et Yang

-. Male genitalia with apical margin of hypopandrium rather subtriangularly bidentate, shallow angularly emarginate mesally in lateral view ----- *koreana* sp. nov.

## *Syneches koreana* sp. nov.

Description: Generally coloring dark brown, dark greyish brown or black partially, pollinose on body surface. Wing tinted with smoky indistinct cloud-like pattern, which darker toward anterior half; costal stigma prominently dark brown, elongate oval; anal cell about as long as basal cell; radical sector strikingly longer than the distance from humeral crossvein to its origin.

Male genitalia symmetrical; hypandrium rather rectangular distally, with apical margin rather subtriangularly bidentate and hooked inwards, shallow angularly emarginate mesally in lateral view; aedeagus bidentate apically, divergently hooked directing downwards.

Type-material: Holotype ♂, Mt. Balwangsan, GW, Korea, 16, VI, 2020, YJ Kwon; paratypes: 2♀, same data as holotype.

Distribution: Korea (new record: Central).

## References

Chvála M, Wagner, R (1989) Family Empididae. In Catalogue of Palaearctic Diptera, 6. Edited by Á. Soós. Akadémiai Kiadó, Budapest, 435pp.

Kwon YJ, Kwon JH, Suh SJ (2021) A preliminary catalogue of the danceflies from Korean peninsula (Diptera: Empididae). 50th Anniversary Conference of the Entomological Society of Korea: 68.

Lee CE, Kwon YJ (1975) Notes on the danceflies from Korea (Diptera: Empididae). Proceedings of the annual meeting of the Entomological Society of Korea, Seoul.

Yang D, Zhang KY, Yao G, Zhang JH (2007) World catalog of Empididae (Insecta: Diptera). China Agricultural University Press, Beijing, 599pp.

Yang D, Yang CK (2004) Diptera Empididae: Hemerodromiinae, Hybotinae. Fauna Sinica, Insecta, 34, i-x, 335pp., pl. 1.

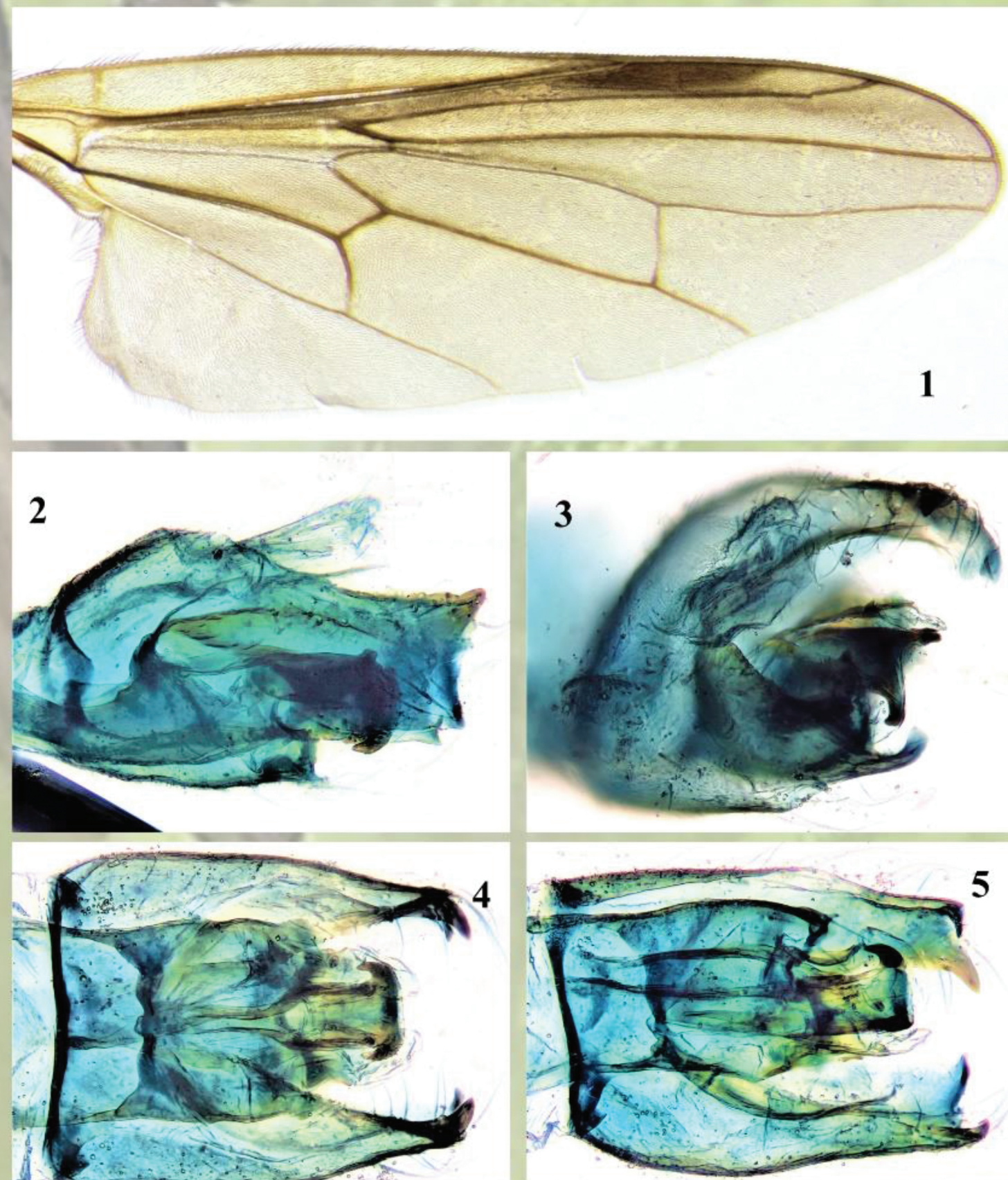


Fig. 1-5. *Syneches koreana* sp. nov. 1: wing, 2: male genitalia in lateral view, 3: ditto, caudal view, 4: ditto, dorsal view, 5: ditto, latero-dorsal view.